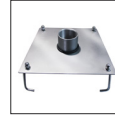
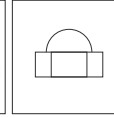


REF. 108E

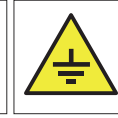
Waterfall in stainless steel AISI 316L
(Marine quality). Polished or satin finish.



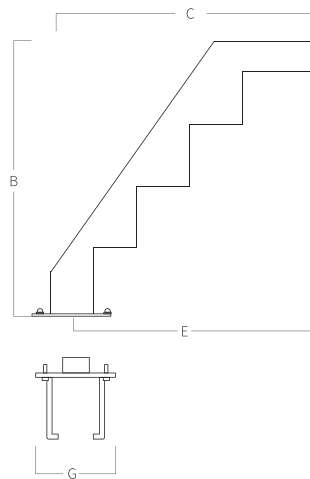
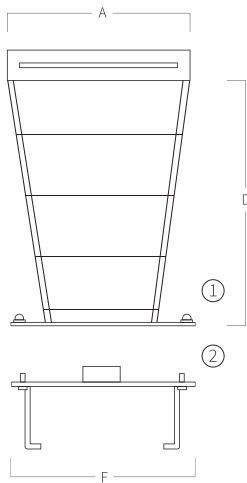
Support
Included



Nuts
Included



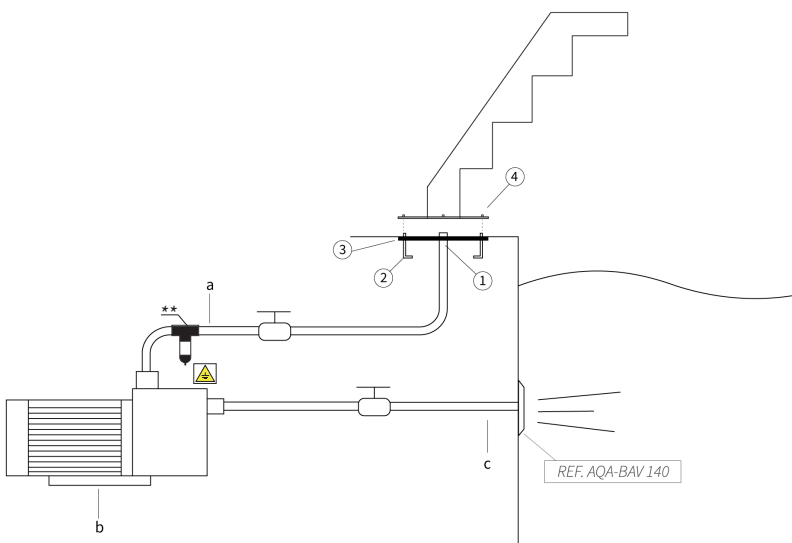
Earth
Connection



A	B	C	D	E	F	G
500	710	825	660	745	285	245
19,69	27,95	32,48	25,99	29,33	11,22	09,65

Measures in mm
Measures in inch

- ① Nuts to fix waterfall.
- ② Support to embed in the ground level.



MOUNTING SYSTEM

- 1) Connect the water intake to the support with 2" female fitting.
- 2) Fix the earth connection to the support.
- 3) Embed the support to get the platen at ground level.
- 4) Fix the waterfall with the nuts.
 - a) Impulsion tube 2" (Ø63mm).
 - b) Self-priming pump:
 - 108E (500): 1,5hp - 21,5m³/h (Ref. AQA-B21).
 - c) Suction tube 2" (Ø63mm).

*Pneumatic or electric button to be defined in work.

**AQA recommends to install a POOL PROTECTOR to avoid corrosion of the existing stainless steel elements in the pool.